

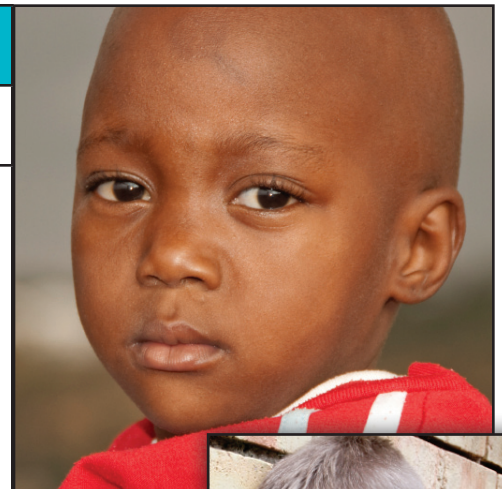
# Estimated Annual Cost of **Child Abuse** and **Neglect** in Pennsylvania



Pennsylvania  
**Family Support Alliance™**

Protecting children from abuse

<b>Direct Costs</b>	
State and county services to families	\$1.3 billion <sup>1</sup>
<i>Including:</i>	
Investigations of reports by county agencies	\$46.6 million <sup>1</sup>
ChildLine (toll-free reporting line)	\$4.1 million <sup>1</sup>
Child abuse history and background checks	\$1.2 million <sup>1</sup>
OCYF Regional Offices (costs related to investigation of reports)	\$2.8 million <sup>1</sup>
Mental health services to victims	\$69.8 million <sup>2</sup>
Medical care to victims	\$11 million <sup>2</sup>
Public services	\$17.2 million <sup>2</sup>
Foster care services	\$715.9 million <sup>4</sup>
<b>TOTAL DIRECT COSTS:</b>	<b>\$2.11 billion</b>
<b>Indirect Costs</b>	
Special education	\$5.47 million <sup>3</sup>
Juvenile justice system	\$59.9 million <sup>3</sup>
Lost productivity to society	\$157.4 million <sup>2</sup>
Quality of life	\$1.2 billion <sup>2</sup>
Adult criminal justice system	\$18.2 million <sup>5</sup>
<b>TOTAL INDIRECT COSTS:</b>	<b>\$1.44 billion</b>
<b>TOTAL COST:</b>	<b>\$3.55 billion</b>



FSA



## Sources

1. Pennsylvania Department of Public Welfare, "2008 Child Abuse Report," pg 31. [www.dpw.state.pa.us/Resources/documents/pdf/annualreports/2008ChildAbuseReport.pdf](http://www.dpw.state.pa.us/Resources/documents/pdf/annualreports/2008ChildAbuseReport.pdf)
2. Children's Safety Network – Economics and Data Analysis Resource Center. The costs were adapted to Pennsylvania using state-specific price adjusters. Costs were calculated using incidents reported in the Child Maltreatment 2006, National Center on Child Abuse and Neglect Data Set, reported in 2007 dollars. [www.childrensafetynetwork.org/publications\\_resources/PDF/childmaltreatment/CAN07PA.pdf](http://www.childrensafetynetwork.org/publications_resources/PDF/childmaltreatment/CAN07PA.pdf)

*Mental health services* include payments to psychiatrists, psychologists, social workers and pastoral counselors; also includes insurance claims processing.

*Medical care to victims* includes payments for hospital and physician care, as well as emergency medical transport, rehabilitation, prescriptions, allied health services, medical devices and insurance claims processing. For fatalities, it also includes coroner and premature burial costs.

*Public services* include police, fire, paramedic, ambulance and helicopter transport costs. It excludes mental health services.

*Lost productivity to society* includes wages, fringe benefits, schoolwork, and housework lost by the injured. This estimate excludes earnings lost by family and friends caring for the injured.

*Quality of life* places a dollar value on pain and suffering and lost quality of life to victims and their families. The value is computed from jury awards for pain, suffering and lost quality of life to victims and their families due to physical injuries and fears. For deaths, this value is computed from the amount people routinely spend to reduce their risk of death.

3. Prevent Child Abuse America, "Total Estimated Cost of Child Abuse and Neglect in the United

States," by Ching-Tung Wang, PhD, and John Holton, PhD. (2007). [www.preventchildabuse.org](http://www.preventchildabuse.org)

To calculate the cost of *Special Education* services: 4,201 cases of child abuse or neglect were substantiated in 2008. 22% of maltreated children have learning disabilities requiring special education. The additional expenditure attributable to special education services was \$5,918 per pupil (national figure, 2000 dollars).

Calculation:  $4,201 \times .22 \times \$5,918 = \$5,469,534$ .

*Juvenile Justice System:* 4,201 children experienced some form of maltreatment in 2008. An estimated 27% of children who are abused or neglected become delinquent, compared to 17% of the general population, for a difference of 10%. The average annual cost of caring for a juvenile offender in a residential facility was \$142,610 in Pennsylvania in 2007. This calculation does not include services for juvenile probation or other support services to juveniles not in residential care.

Calculation:  $4,201 \times .10 \times \$142,610 = \$59,910,461$ .

4. Pennsylvania Partnerships for Children, "State of Child Welfare 2009." The number of children living in Pennsylvania's foster care system in 2008 was 31,537. *Foster care* is defined as substitute or out-of-home care.

Philadelphia Inquirer, December 16, 2009, "DHS says adoptions, reunifications up in Philadelphia." DHS Commissioner Anne Marie Ambrose reports that the annual cost to keep a child in a foster home was \$22,700 in 2009.

Calculation:  $31,537 \times \$22,700 = \$715,889,900$ .

5. Pennsylvania Department of Corrections, "Costs and Population." The direct expenditure for operating Pennsylvania's criminal justice system, available at [www.cor.state.pa.us/stats/lib/stats/Costs\\_Pop.pdf](http://www.cor.state.pa.us/stats/lib/stats/Costs_Pop.pdf).

According to the National Institute of Justice, 13% of all violence can be linked to earlier child maltreatment. In 2008, the annual cost per inmate in PA prisons was \$33,236.

Calculation:  $4,201 \times .13 \times \$33,236 = \$18,200,328$ .

